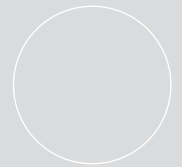


Folding doors

GÜNTHER-TORE



Modern, economic solutions



Robust,
flexible,
economic.

Folding doors



The needs of our customers are our passion. Developing innovative technologies of highest quality and bringing it to

the market is our drive.

Both of these aspects unify the Günther Group across all disciplines and limits. The same is true for the uncompromising will to succeed. The courage to put new ideas quickly into practice. And last but not least, the ambition to solve any problem with perfection we are confronted with.

Our largest asset, however, is our customers' great confidence. Confidence in our capabilities, our experience, and in our readiness for action. Confidence in the quality and reliability of our products.

We owe it to this confidence that today all companies of the Günther group are leaders in their respective markets. We are pleased about it. We are proud of it.

And this success encourages us to continue to assist our customers with the best individual and progressive solutions of highest quality.

We are there for you.

Yours sincerely,

A handwritten signature in black ink that reads "Wolfgang Günther". The signature is written in a cursive style with a horizontal line at the end.

Dr.-Ing. Wolfgang Günther

Perfect solutions for you



Aluminium model AFS

This folding door is made up of extruded aluminium profiles, which are firmly linked with screw connections.

Robust hinges made from die cast aluminium, each with two maintenance-free brass bushes, make the AFS almost indestructible and very reliable.

This Günther door is optionally available single-walled without insulation or double-walled with

insulation. The doors are also available with fillings made of aluminium stucco skins, or with generously dimensioned clear or pearled plastic boards. This is the optimum solution wherever high daylight levels are required, or where translucent materials play a main role in the overall architectural concept.



Steel variant GDW-54 PU

The GDW-54 PU variant convinces through high stability and excellent thermal insulation characteristics. The door leaves of this versatile folding door from Günther consist of a steel sandwich construction that is uniformly filled with HCFC-free structural PU foam. Optionally, they are available with windows.

We offer this model with 3 to 6 door wings as standard. Optionally, the GDW-54 PU with a maximum of 2 x 2 wings is also available with a rapid motion drive that opens the door in just under 8 seconds. An even faster, semi-automatic special model (GDW-54 PU/F) with gas spring support according to DIN 14092 Part 2 is available for use in emergency service stations.

Folding doors

This benefits you
should not disclaim

CONTENTS

Page

- 4 Product benefits
- 6 The AFS aluminium folding/sliding door
- 8 The GDW-54 PU folding door

A company is only as good as its readiness for taking up and mastering extraordinary challenges. With plenty of pioneering spirit, creative engineering and uncompromising customer orientation, Günther-Tore has grown into an SME company with special qualities.

30 years ago, we were the nucleus for today's Günther group with 1500 staff in 8 enterprises. We are motor and innovator for further growth in Europe and around the world. With agencies and branches in all main European countries, we offer our customers a comprehensive network of external service staff and installation companies. Production, installation, service and maintenance from a single source!

Intense dialog with our customers through flexible structures and short decision routes is a top priority for us. Partnership is the aim! The administration and production processes and procedures are controlled by modern computer systems and are certified according to DIN ISO 9001.

Our special strengths include individual solutions for technically demanding tasks. Be it large-format doors, complex controllers or exceptional building architecture.

Our engineers and specialists will find a solution. In addition to folding doors, we also produce sectional doors, rolling doors, rolling grids and garage doors. At Günther-Tore, you will therefore always find a suitable door for your project. A maintenance contract from Günther-Tore can provide peace of mind for ensuring the reliability of your door system over many years.



Fast, space saving solutions

Folding doors are the optimum solution where speed is crucial. Folding doors can be folded or pushed to one side with little effort and without requiring a large opening radius. The complete opening height is available immediately.

Folding doors from Günther offer optimum solutions even where space around the lintel is tight. No other door system requires as little space above the door. Depending on space requirements, folding doors from Günther can open to the inside or outside - ideal for car wash installations, where the brush system usually travels very close to the door. The folding design enables maximum opening widths.

The maximum possible height of 6,500 mm offers plenty of space for demanding construction projects.

The technical and visual diversity of Günther folding doors meets all requirements in terms of function and design.

Options include large-surface glazing, thermal insulation filling or special paint finishes in any RAL colour.

Designers and architects will be impressed by the individually adjustable field height. Existing design patterns can easily be incorporated. The door can optionally be an integrated or representative component of the building.



1 AFS • E6/EV1 anodised

2 AFS • RAL 5010

3 AFS • RAL 3005

Folding doors

AFS ALUMINIUM FOLDING/SLIDING DOORS



That's how strong aluminium can be

Top quality of all components is the basis for the universal applicability of Günther folding doors. And for their particularly long service life. Folding doors are designed for long-term use under harsh conditions. Because they use fewer movable parts and are therefore less prone to wear and tear. The absence of springs and ropes makes them very resilient.

The extruded aluminium profiles of the AFS folding/sliding door are firmly linked with screw connections. This enables comparatively simple replacement of individual wings and sections in the event of damage. Robust construction elements such as the hinges made from aluminium die cast, each with 2 maintenance-free brass bushes, make folding doors almost indestructible and particularly reliable. Not for nothing are folding doors from Günther used in many fire stations, road construction departments and car workshops.

The surface of the AFS aluminium folding/sliding doors is E6/EV1 anodised as standard. Optionally, the profiles and the fillings can be powder-coated in any RAL colour.

The option of large-surface glazing makes the doors attractive wherever high levels of natural daylight are required. And obviously wherever glass plays an important role in the architectural design.





The AFS design options are almost unlimited. The aluminium frame and glazing construction are available in a wide range of designs and colours. This is provided by a large range of colours. A variety of plastic glazing or metal frame fillings are available, and frame heights can be specified individually, so that an AFS door can become an interesting architectural design element.

- 1 AFS • RAL 7016
- 2 AFS • E6/EV1 anodised
- 3 AFS • RAL 5010/9016

YOUR BENEFITS

- Fast opening and closing
- Minimum space requirements in the lintel area
- Minimum space requirements in front of/behind the door
- Extremely robust and long-lived
- Low wear even in very harsh conditions
- Optionally open and close to the outside or inside
- With pass doors and side doors (option)



Folding doors

GDW-54PU steel folding



4

High performance made from steel

The GDW-54 PU steel folding door is very versatile and particularly economic. As standard, the doors are available with 3 to 6 wings, resulting in a very large opening width of up to 7,500 mm. Additional wings and even larger widths are available on request. The sandwich door leaves (steel - PU foam - steel) with a thickness of 54 mm ensure excellent stability and thermal insulation. The steel sheet is galvanised and powder-coated in RAL 9002 (grey-white), and thus well equipped for a long life under harsh everyday conditions. Optionally, the wings are available in special paint finishes.

Door systems with a maximum of 2x2 wings can optionally be equipped with a rapid motion drive. The opening time is only about 8 seconds.

Version GDW-54 PU/F is available for even faster opening. It operates semi-automatically with gas spring support and meets the standards and requirements for doors in fire stations according to DIN 14092 Part 2. The conditions of workplace directives ASR 10/1 (doors) and of GUV 1610 and 17.1 are also met.

Wings taller than 2,700 mm can optionally be glazed, for heights of more than 4,000 mm two double-walled panes can be used above each other. Optionally, one of the wings can be equipped with a walk-through door, suitable as emergency door.

However, with this description the diversity of GDW-54 PU steel folding doors from Günther is still not exhausted. Please do not hesitate to contact us if you have further questions or requirements.



5



1 Intelligent controls and operational control elements ensure modern and up-to-date door operation.

2 The upper aluminium die cast hinges are well suited for dealing with the static lateral forces.

3 Each wing pair has its own drive. An individual wing may also be equipped with a drive, so that it can be operated like an automatic door.



4 GDW 54-PU • RAL 3000

5 GDW 54-PU • RAL 5010

6 GDW 54-PU • RAL 3003

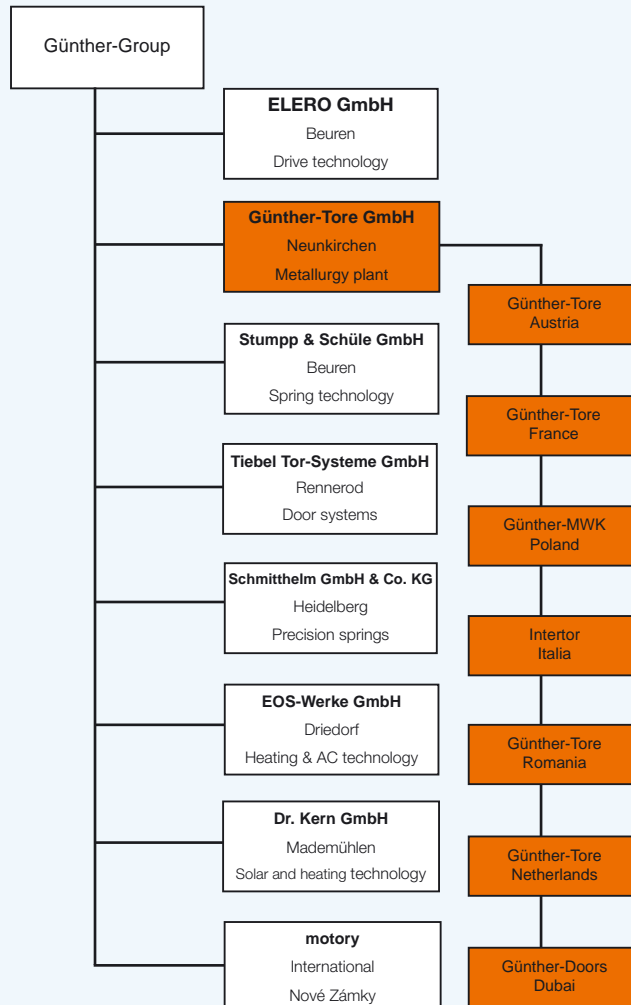
A strong group



Main Factory Neunkirchen

Günther-Tore GmbH
Metallwerk
Industriegebiet
D-56479 Neunkirchen
Tel. +49 (0) 64 36/601-0
Fax +49 (0) 64 36/601-130
www.guenther-tore.de
info@guenther-tore.de

Folding doors



Your door specialist: